

GRANT REPORT TO BELLA VISTA FOUNDATION

APRIL 2021



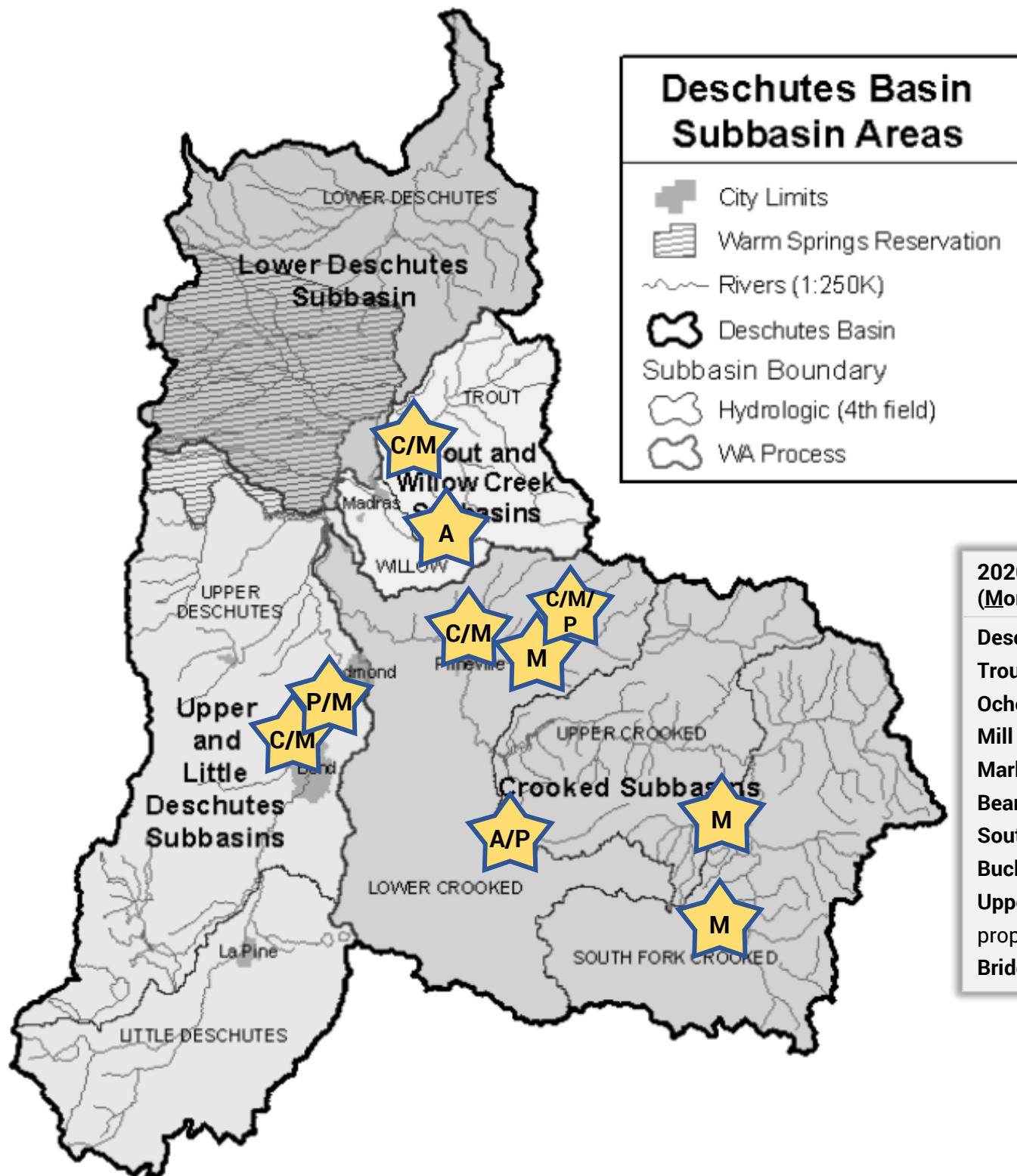
**THINK
WILD**

Through its
program



**BEAVER
OREGON
WORKS**







SUMMARY

Through the Bella Vista Foundation's investment in May 2020 Think Wild has advanced conversations and understanding of the benefits of beavers and beaver-related restoration in the Deschutes River (despite COVID limitations).

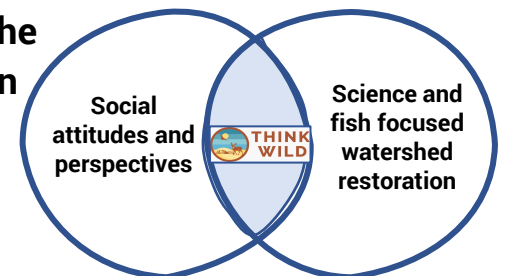
The Beaver Works Oregon program focuses on decreasing beaver mortality, and creating public awareness and resources which allow beaver to freely manipulate the environment in a way that has coevolved with native species for millennia.

Through this approach, we aim to increase success and longevity of human-initiated riparian restoration work and expand purely beaver-based work far beyond the bounds of such projects. By treating beaver as an "umbrella species," a multitude of ecosystem threats are addressed simultaneously and efficiently.

Because beavers are ecosystem engineers, this collaboration has a force-multiplier effect, producing returns on investment far beyond those achieved through direct restoration alone.

There are four goal areas that we've pursued in the past year since funding was awarded. This report will touch on these activities, outcomes and the investments made to date.

The strength of this innovative program lies at the intersection of watershed restoration and human dimensions – stimulating conversations and advancing community attitudes to tolerate and even embrace this 'predator' species.



1. FINANCIAL

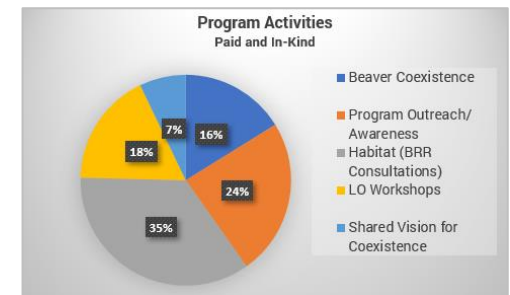
The total program budget was \$52K, for which \$27K was provided by the generous Bella Vista grant awarded May 2020. Another \$25K was also provided by a partner foundation, in the same time frame. Program activities are categorized in 5 activity areas.

Expenditure outlays to date totaled \$22K, less than the anticipated program costs in 2020 by \$30K – for two reasons:

- \$35K of in-kind time and training volunteered by the community, field technician and program director magnified grant-funded activities, and
- pandemic imposed limitations on community outreach slowed some group activities in the areas of outreach/awareness, BRR consultations and Shared Vision facilitation.

\$30,498 is designated to continue to fulfill these activity focus areas through 2021.

PROGRAM ACTIVITY AREAS	4/20-3/21		2020 Prog.		In-Kind/Time Donated
	Spent		Budget	Difference	
1 Beaver Response Team	\$ 3,803	\$	7,605	\$ 3,802	\$ 5,100
2 Program Outreach/Awareness	\$ 10,166	\$	15,015	\$ 4,849	\$ 3,855
3 BRR Consultations (Habitat)	\$ 1,103	\$	10,140	\$ 9,037	\$ 17,500
4 LO Workshop	\$ 5,273	\$	5,980	\$ 708	\$ 7,750
5 Shared Vision for Coexistence	\$ -	\$	4,550	\$ 4,550	\$ 1,050
Outreach Hard Costs	\$ 425	\$	4,000	\$ 3,575	\$ -
Travel cost day trips	\$ 232	\$	2,500	\$ 2,268	\$ -
Equipment	\$ 1,290	\$	3,000	\$ 1,710	\$ -
TOTAL PROGRAM COSTS	\$ 22,292	\$	52,790	\$ 30,498	\$ 35,255



Additional fundraising activities

Grant applications have been submitted for the program funding, as follows:

- 3 grant applications were pursued, not awarded in 2020
- **A grant application to Portland General Electric is underway** in partnership with ONDA and the Middle Deschutes Watershed Council. If awarded, the resulting project will provide deep insights into the Upper Willow Creek subbasin and its potential for beaver related restoration
- Separately, Think Wild was asked to partner with Eco Logical Research / Utah State University in the **Bridge Creek, Oregon monitoring program – under a 3 year grant of \$239K awarded by OWEB through Think Wild**. Monitoring activities begin fully in June 2021.



2. ACTIVITIES

Building on successful collaborations and landowner outreach and education, Think Wild's Beaver Works team has worked throughout the Deschutes River Basin to advance these activity areas and goals:

1. Fill the gap in educational outreach to land stewards and the general public about the role and opportunities of having beaver on the landscape,
2. Connect land stewards with the resources and knowledge necessary to improve beaver habitat on their properties,
3. Provide free, hands-on support in implementing non-lethal solutions to mitigate actual or perceived impacts of having beaver on the landscape, and
4. Guide watershed councils, SWCD's, and other restoration professionals on project design that optimizes successful outcomes for beaver-related restoration (BRR) projects.

Additionally, the team embraced opportunities for beaver colony monitoring and 'Riverhoods' establishment that has provided great insights and understanding, while also stimulating community interest and excitement around beavers and a desire to protect them.

- Our local collaborators and partners in these activities include:
 - US Forest Service - Ochoco National Forest
 - Crooked River Watershed Council
 - Middle Deschutes Watershed Council
 - 3 Soil and Water Conservation Districts for Crook, Deschutes and Jefferson Counties
 - Oregon State University – Cascades
 - High Desert Museum
 - COCC Unmanned Aviation program
 - Anabran Solutions / Eco Logical Research
 - Coalition for the Deschutes
 - USDA / NRCS
 - Oregon Department of Fish and Wildlife (ODFW)
 - Oregon Natural Desert Association (ONDA)
 - Deschutes County and City of Prineville



3. RESULTS AND IMPACT

Bella Vista's project funding provided the foundation to catapult activities and execution in the field, tapping the professional expertise needed in communications, outreach/education and science-based evaluations. Our approach emphasis has been to build relationships, gain deep understanding of the attitudes, needs and solutions around beaver, and thoughtfully embracing opportunities that arose - with these results to share.

SUPPORT

- Launched the Beaver Response Team providing coexistence solutions to Central Oregon. Fielded 10 inbound calls to troubleshoot beaver challenges, guiding homeowner/landowners on solutions. Of these:
- Executed 7 coexistence solution projects providing fencing and/or trail cam monitoring (Upper Deschutes: Tumalo Site 1, Cline Falls Park (OSP), Tetherow Crossing, City of Redmond, Crooked River watershed: Mill Creek Site 1, Ochoco Creek, and Middle Deschutes: Trout Creek Site 1)
- Created two do-it-yourself videos for fencing and sand paint solutions.
- Field technician's successful completion of the Beaver Institute's training as a Beaver Wetlands Professional, and is a member in good standing of the BeaverCorps Association.

HABITAT

- Built and conducted a 60 minute online webinar oriented to Working Land owners, with emphasis on Beavers and Water and coexistence solutions. 20 first-timers attended the March 2021 offering, half of attendees were restoration professionals and half were farming and ranching landowners. Plans to offer the webinar 2x more in 2021, with the goal for in person workshop with Beaver Dam Analogue component this Fall 2021 in Jefferson County.
- Visited one or more times with 10 separate working lands landowners to assess beaver habitat potential and solutions to enhance habitat along their riverine reaches.
- Documented one in-depth "Beaver Tale" telling the story of beaver's changes to the working lands landscape, with 2 more stories in Upper Crooked watershed in progress.
- Secured professional filmmaker donation of a 15-20 minute documentary of beaver restoration sites in the Ochoco National Forest and Crooked River watershed. The first phase of this project is underway.
- Launched "Field Reports" blog on website to share observations with trail camera video of beaver activity in the basin.

3. RESULTS AND IMPACT (CONTINUED)

AWARENESS

- Established a first “Riverhood” as part of a “River Neighbors” campaign activating whole riverfront neighborhoods around stewarding riverine spaces, and understanding beaver impacts (good and bad) to the landscape. Riverhoods have much potential for building community awareness – in particular on publicly owned sites – and we have one more in progress 2021 with Deschutes County.
- Conducted 8 “River Walks” in the Old Mill District – guided, easily accessible one hour walking tours to in-town residents and visitors. Each walk was filled to capacity, and very well-received.
- Captured and uploaded 20+ hours of trail camera footage to Youtube as part of our River Neighbors monitoring and Field Reports by a dedicated volunteer.
- Harvested, and in progress planting, 400 Black Cottonwood sticks from USFS native plant nursery, planting in 3 locations on the Deschutes River and 2 locations in the Crooked River tributaries. Each planting is an opportunity for public awareness and understanding. The public planting locations include educational signage on beavers and wildlife for site visitors.
- Growing visibility as “go to” beaver experts and advisors, growing local recognition through social media channels, beaver specific postcard mailings, email newsletters and growing helpful website content and visitor traffic overall by ~300%.

“I am continuously impressed by their ability to make new connections and get people thinking about beaver on the landscape in new ways.

The networks they are creating and the conversations that they are enabling are filling critical niches in the process of bringing beaver-related considerations to the fore of restoration planning in Central Oregon.”

Jefferson Jacobs, Riparian Restoration Coordinator
Oregon Natural Desert Association

“We’re interested to establish a Riverhood at this city park here along the Deschutes River – I hadn’t realized the benefits of beaver until now. 5 years ago, we lethally removed the beavers when challenges arose, now we’ll do things different.”

Park Maintenance Manager, City of Redmond

“We have not received any phone call complaints in the past year of the coexistence project in Tumalo.” And, “its good that your program addresses habitat as well as coexistence.”

Randy Lewis, Oregon Department of Fish & Wildlife





4. LESSONS LEARNED

While the program activities aligned quite closely to those planned (despite pandemic limitations), we want to share some of our learnings that inform what's possible, and the path forward to advance conversations and further understanding of benefits to beavers and beaver related restoration in the Deschutes River Basin.

- **The need for in person relationship building is essential to facilitating and establishing a Landowner 'Shared Vision' around beavers.**

While still viewed as a future building block for waterways occupied with multiple landholder reaches, we learned that more socializing and trust building within the community is required before providing this leadership in a meaningful way.

- **Collaboration with municipal organizations on public property is high-value for increasing community awareness and sense of riverside and riverways stewardship.**

Establishing local 'Riverhoods' where beavers and homeowners share place – and adjacent to municipal locations (County, City, State parks for example) has garnered much interest and large rewards at low cost.

- **Being nimble and opportunistic, adapting to opportunities helps to inform the need and what activities provide the biggest returns.**

Flexibility and some funding has provided opportunities to the Beaver Works team to 'pilot' new ideas and projects – to see where community interest lies and increase our own knowledge and understanding. Early exploration of trail camera monitoring – afforded by a handful of inexpensive cameras has yielded a very active Trail camera monitoring with unexpected large insights and understanding.

- **Less demand for coexistence services than anticipated.**

While we did field 10 phone call inquiries in 2020 around beaver damage and landowner challenges, this was half of the call numbers we'd anticipated given early planning conversations with Oregon Department of Fish and Wildlife. This may be a result of increasing, natural tolerance for beavers on the landscape as coexistence is promoted throughout the community.

We do anticipate the continued need for readily available solutions, in particular over time as beaver do become more abundant, present on the landscape – and we are trained and equipped to deliver.



5. FUTURE PLANS AND SUSTAINABILITY

The Beaver Works team will continue to build on the foundation in place – continuing rural, working lands outreach, education and habitat improvement focused on both private and public landowners.

In coordination with the organization's educational staff and volunteers we will also continue building awareness to broader urban communities, those influential in advocating for much needed beaver-friendly changes to state management and legislation.

2021: Continuing Outreach and Documenting Beaver Success on the Landscape

- Provide subbasin and watershed level analysis and expertise to guide restoration professionals on prioritizing and implementing project designs oriented to beaver success.
- Produce 15-20 minute film of beaver restoration and habitat in the Ochoco National Forest and surrounding private land holdings.
- In progress to implement an Advisory Group meeting 3x/year comprised of 5 leaders in the restoration and working lands communities.
- Add one additional "Riverhood" – for a total of two in 2021 - in collaboration with County, City and Parks organizations – planting, educational signage and monitoring.
- Pursue further OWEB funding of beaver habitat related projects.
- Evaluate offering native tree planting habitat restoration services.
- Continue to build 'citizen-science' monitoring program, documenting beaver activity within the basin while engaging citizens passionate about the program mission.

3 – 5 Year Outlook / Goals

- We expect to implement and oversee 3-5 ongoing Deschutes basin beaver Riverhoods in collaboration / partnership with other organizations.
- Have in place a robust citizen-science monitoring program to document beaver colonization, movement and learnings.
- We envision two full time, seasonal field technicians (in months of March through October) providing native tree planting, monitoring and habitat consultations throughout the Deschutes River Basin.
- Look to expand the beaver program into further eastern Oregon watersheds, documenting positive stories, providing coexistence solutions and beaver restoration consultations.



THANK YOU FOR YOUR SUPPORT

We invite you to view the activities and outcomes made possible this past year through your support, in the photographs that follow.

For questions or further information please contact either one of us.

Sally Compton, Executive Director
Think Wild
sally@thinkwildco.org
541-933-5437

Reese Mercer, Program Director
Beaver Works Oregon
reese@thinkwildco.org
541-362-1024



THEORY OF CHANGE

Issue

Lack of citizen awareness of beaver benefits on landscape, and the obstacles to recolonization. Most citizens want more beaver on landscape but are unaware that current policies and management don't support population growth.

Issue

Landowners lack the tools for coexistence when beavers cause problems. Landowners who *want beaver*, seek expertise on necessary habitat.

Issue

Severe stream degradation limits beaver ability to successfully colonize. Need a jump start on vegetation and habitat for beaver survival.

Issue

Human predation is high, trapping and "Predator" status, beaver are unable to get a foothold and colonize.

Strategy 1

Build aspirational beaver narrative to majority of Oregonians

Message: "Fulfill the 'Beaver State'"

Activate citizens to support Strategy 3 and then 4 (when opps present)

Strategy 2

Provide co-existence tools to those actually living on the land and sharing place with beaver.

Strategy 3

Help to create the conditions for beaver to be successful by promoting restoration activities so that beaver can be successful on precarious landscapes

Strategy 4

Support policy changes statewide to support beaver, diminish predation, and recognize formally benefit of beaver to watersheds

Outcome A

Oregonians inspired to ask for change in beaver management from state legislatures and agencies.

Outcome B

Beaver allowed to survive and populate, as human infrastructure is sustained, not compromised, by beaver activity.

Outcome C

Jumpstart beaver habitat for long term beaver success, not population sinks.

Outcome D

Beaver friendly state policy and management.

Outcome E

Less human predation.

OPPORTUNITY

More beaver on the landscape will increase:

- 1) wildlife populations and biodiversity,
- 2) ESA species habitat and
- 3) watershed health/resilience.

VISION 5x

Beaver on the landscape by 2040

For Improved:

- Wildlife habitat
- Water availability
- Water quality
- Watershed resiliency



Synergies are achieved by pursuing strategies in parallel, they feed each other.

BEAVERS IN OUR LANDSCAPE

A presentation and discussion on understanding and living with beavers on working lands.

Wednesday, March 10th, 12pm to 1:30pm

Whether you love them, hate them, want to understand them, think you need them, or just want to learn how to live with them, you will find this webinar useful.

Topics include:

- **Beaver basics** – Natural history, ecology and behavior
- **Beavers and water** – How beavers alter stream flows with Skuyler Herzog, Ph.D. Hydrologist, OSU-Cascades
- **Beaver challenges** – Issues, overview tools and techniques for coexistence
- **Q&A** – An opportunity to discuss beaver management issues, options and information needs

An integral part of the workshop will be discussion about challenges and concerns.



Registration is free at www.beaverworks.org/webinar

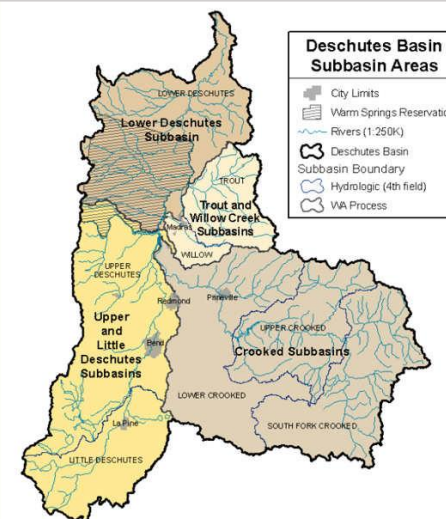
Phone: 541-362-1024

BEAVERS IN OUR LANDSCAPE



In collaboration with
Middle Deschutes Watershed Council
Deschutes County Soil and Water Conservation District

Hosted by Connect Central Oregon at the OSU-Cascades Media Lab



Thursday May 28TH, 2020
at 7 pm
PRESENTING...



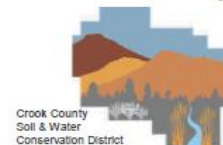
The Beaver Believers

Film screening is on us!
Watch this delightful one hour film
in the comfort of your own home.
(via Zoom for online)

Watch the trailer at www.thebeaverbelievers.com

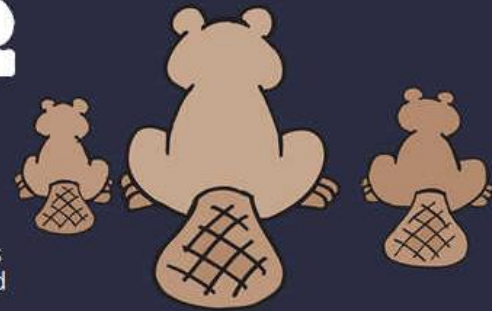


In collaboration with these Central Oregon organizations working to enhance watershed health.





BEAVER TALES



Stories of beaver on Oregon landscapes and how they shape our watersheds and native wildlife habitat.

#beavertales

CentralOregonian

Tuesday, November 10, 2020 • Vol 138, Issue 68 • centraloregonian.com • 75 cents



Local legislators retain seat after election

■ Democrats claim state treasurer, attorney general and secretary of state offices, all ballot measures approved

By Jason Chaney
Managing Editor

Crook County's representatives in the Oregon Legislature will go unchanged, according to the results of the 2020 general election. Republican incumbent Vikki Breese-Iverson handily defeated Democratic challenger Barbara Fontaine for House District 55 Representative, and Republican incumbent Dennis Linthicum won Senate District 28 by a

wide margin over Democrat Hugh Palic. Iverson won 73.11% of the vote district-wide, and 77.66% of Crook County voters chose the incumbent. "I am happy and humbled that I received an overwhelming percentage of the votes in House District 55," Iverson said. "Rural Oregon has a champion in me. I plan to be an effective leader in Salem and help Oregon move forward. I am excited that Republicans picked up

See ELECTION / Page A12

COVID numbers set state and local records

■ Crook County had highest daily COVID-19 numbers this past week

By Ramona McCallister
Reporter

Weekly case counts of COVID have steadily surged in Crook County the past four weeks. Crook County has seen one more fatality from COVID in the past week, in addition to two deaths in mid-October. "I am expecting we will have our highest week total this week," commented Crook County Public Information Officer and Emergency Preparedness Coordinator Vicky Ryan on Friday, Nov. 6.

See COVID / Page A12

Salute to Veterans inside today's edition



By Mark Garber
Pamplin Media Group

"When Pamplin Media Group published its first 'Salute to Veterans' special section six years ago, our urgent motivation was to record the stories of World War II veterans, who were dwindling in number as the years marched along.

Back in 2014, it had been 70 years since D-Day and almost 70 years since the end of hostilities in a war that reshaped the world in nearly every way. We wanted to document the living history of individuals who comprised what's become known as the

RESTORING RIPARIAN HABITAT

It took four years but the Marks Creek project is rumbling ahead with the heavy machinery work to be finished during the fall.



Redmond man injured in office involved shooting

■ Officers from Central Oregon Emergency Response Team fire weapons at during local high-risk

By Jason Chaney
Managing Editor

A high-risk stop performed by Oregon Emergency Response Team (CERT) in Prineville resulted in involved shooting and injury to a Redmond man Thursday. According to a report from

IN THE FIELD



IN THE FIELD



39%
of the plan's Strategy Species listed as **endangered or threatened** are known to especially **thrive in beaver-enhanced riparian habitat**.

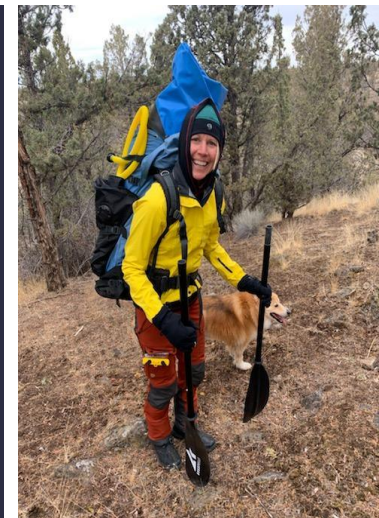


BEAVER TALES

Stories of beaver on Oregon landscapes and how they shape our watersheds and native wildlife habitat.



#beavertales





IN THE FIELD



A PROGRAM OF THINK WILD – WILDLIFE HOSPITAL AND CONSERVATION SERVICES

- Uniquely positioned in community to help at intersection of wildlife and people.
- Existing platform, staffing, infrastructure and resources to support the mission.
- 4 acre facility that can house beavers humanely, responsibly if translocation necessary.
- Existing relationships with federal and state wildlife agencies.
- Member of the Oregon-wide network of Wildlife Rehabilitators – footprint throughout the State
- Leverage existing funding sources and donor base



A program of  **THINK WILD**



SITE PLAN



62410 Erickson Road, Bend, Oregon

4 acres provisioned to hold wildlife in low stress setting.
Permitted by USFWS and ODFW.

